



**Foula Store**

## About us

Foula Store has established a global distribution network spanning the United States, Canada, Mexico, Japan, China, Hong Kong, Taiwan, Thailand, Australia, Brazil, and the Middle East. Trusted by over 120,000 lash artists and salon owners in 18 countries, Foula is renowned for its extensive range of high-quality products. Our premium Japanese-made adhesives, crafted from the finest ingredients, and 100,000 extension trays are shipped monthly worldwide.

We' ve revolutionized lash education with our original curriculum, training lash artists not only in advanced techniques but also in product selection and essential eyelash extension knowledge. As a global leader, our

## Vision

Our vision is to provide products and services to enrich each and every client's beauty and lifestyle.

## Mission

Our mission is to empower every client with the opportunity to transform and rediscover themselves, unlocking the potential to embrace and express their inner beauty.

## Why Foula?

We take pride in staying true to our roots, offering products at accessible prices with a thoughtful pricing structure tailored to customer needs. Each product is a blend of innovation, high-quality materials, and cutting-edge technology, reflecting our commitment to excellence. Dedicated to our craft, we strive to provide the best services, inspiring confidence and satisfaction in every client.





KEIKO SATO

Established in 2007 by our current CEO, Ms. Keiko Sato, a skilled eyelash artist, Kate of Tokyo had its beginnings as a small eyelash extension salon at her premises. During that era, the costs of eyelash extension products and supplies were notably higher than today's market rates. Recognizing the untapped potential in Japan's eyelash extension supplies market, Keiko envisioned creating superior products at more reasonable prices. This insight led to the strategic evolution of the business from a salon-focused model to a retail shop catering to professional eyelash technicians.

In 2010, Keiko initiated the journey with an online retail shop, and in 2012, the first physical retail store, named "Foula Store," was inaugurated in Tokyo. With Keiko's exceptional techniques and charismatic personality, the company has grown to become the largest supplier of eyelash extension items in Japan. Presently, Kate of Tokyo boasts seven physical retail shops strategically located in China, Singapore, Japan, Taiwan, The Middle East, and the USA.

## Table of Contents

05 - 10	ADHESIVE
12 - 14	REMOVER / PRIMER
15 - 21	AFTER CARE
22 - 39	EXTENSIONS
40 - 45	TWEEZER
46 - 50	TAPE
51 - 60	ACCESSORIES
61 - 74	CITE LASH LIFT
75	CITE ESSENTIALS
76	FOULA ESTHETICS ACADEMY

Foula

## Ethyl Pro Glue

5ml : 8001027798

10ml : 8001011343

Made in Japan

Long  
Retention

## DESCRIPTION

■ Lashes	Classic / Volume and Flat
■ Dry Time	2 - 3 sec
■ Complete Drying Time	6 - 7 hrs
■ Retention	4 wks ~
■ Viscosity	150m Pa-s
■ Ingredient	Ethyl Cyanoacrylate
■ Skill level	Adv/Med/Beg
■ Size	5ml / 10ml

Foula

## Fast Glue

8001015874

Made in Japan

Long  
Retention

## DESCRIPTION

■ Lashes	Classic and Flat
■ Dry Time	1 sec
■ Complete Drying Time	1 hr
■ Retention	4 wks ~
■ Viscosity	150m Pa-s
■ Ingredient	Ethyl Cyanoacrylate
■ Skill level	Adv/Med
■ Size	3ml

Foula

## Extra Bond Glue 500 mPa·s

8001027799

Made in Japan

Long  
Retention

## DESCRIPTION

┃ Lashes .....	Classic / Volume and Flat
┃ Dry Time .....	1.5 - 2 sec
┃ Complete Drying Time ...	1 hr
┃ Retention .....	6 - 8 wks
┃ Viscosity .....	500m Pa·s
┃ Ingredient .....	Ethyl Cyanoacrylate
┃ Skill level .....	Adv/Med/Beg
┃ Size .....	5g

Foula

## Extra Bond Glue 200 mPa·s

8001026060

Made in Japan

Long  
Retention

## DESCRIPTION

┃ Lashes .....	Classic/ Volume and Flat
┃ Dry Time .....	1 sec
┃ Complete Drying Time ...	1 - 2 hrs
┃ Retention .....	5 wks ~
┃ Viscosity .....	200m Pa·s
┃ Ingredient .....	Ethyl Cyanoacrylate
┃ Skill level .....	Adv/Med
┃ Size .....	5g

Foula

## Extra Bond Glue 1000 mPa·s

8001026062

Made in Japan

Long  
Retention



### DESCRIPTION

■ Lashes	Classic, Volume and Flat
■ Dry Time	1.5 - 2 sec
■ Complete Drying Time	1 hr
■ Retention	8 wks ~
■ Viscosity	1000m Pa·s
■ Ingredient	Ethyl Cyanoacrylate
■ Skill level	Adv/Med
■ Size	5g

Foula

## Fast Glue Butyl & Ethyl

8001023081

Made in Japan

Low  
Irritation



### DESCRIPTION

■ Lashes	Classic / Flat
■ Dry Time	2 - 3 sec
■ Complete Drying Time	1 hr
■ Retention	4 wks ~
■ Viscosity	200m Pa·s
■ Ingredient	Butyl Cyanoacrylate, Ethyl Cyanoacrylate
■ Skill level	Adv/Med/Beg
■ Size	3ml

Foula

## LED Glue

8001027331

Made in China



## DESCRIPTION

┃ Lashes .....	Classic/ Volume and Flat
┃ Dry Time .....	2 sec (Use LED Light)
┃ Complete Drying Time ...	2 sec (Use LED Light)
┃ Retention .....	5 - 6 wks
┃ Viscosity .....	150m Pa.s
┃ Ingredient .....	Ethyl cyanoacrylate / Pmma / Photoinitiator
┃ Skill level .....	Adv/Med/Beg
┃ Size .....	5ml

Foula

## Ethyl Pro Glue LED

8001027650

Made in Japan



## DESCRIPTION

┃ Lashes .....	Classic/ Volume and Flat
┃ Dry Time .....	2 sec (Use LED Light)
┃ Complete Drying Time ...	2 sec (Use LED Light)
┃ Retention .....	8 wks ~
┃ Viscosity .....	250m Pa.s
┃ Ingredient .....	Ethyl Cyanoacrylate
┃ Skill level .....	Adv/Med/Beg
┃ Size .....	5ml

Foula

## Wrap Glue

8001017651

Made in Japan

Long  
Retention



### DESCRIPTION

- Lashes ..... Classic and Flat
- Dry Time ..... 1 sec
- Complete Drying Time ... 1 hr
- Retention ..... 4 wks ~
- Viscosity ..... 150m Pa·s
- Ingredient ..... Ethyl Cyanoacrylate
- Skill level ..... Adv/Med
- Size ..... 10ml

Foula

## Ethyl Glue

8001004906

Made in Korea

Long  
Retention



### DESCRIPTION

- Lashes ..... Classic / Volume and Flat
- Dry Time ..... 2 - 3 sec
- Complete Drying Time ... 6 - 7 hrs
- Retention ..... 4 wks ~
- Viscosity ..... 150m Pa·s
- Ingredient ..... Ethyl Cyanoacrylate
- Skill level ..... Adv/Med/Beg
- Size ..... 5ml

ADHESIVE

REMOVER  
PRIMER

AFTER CARE

EXTENSIONS

TWEEZER

TAPE

ACCESSORIES

LASH LIFT

Foula

## Pigments Glue

1002001324

Made in Korea

Long  
Retention

### DESCRIPTION

Lashes .....	Classic and Flat
Dry Time .....	2 - 3 sec
Complete Drying Time ...	6 - 7 hrs
Retention .....	4 wks ~
Viscosity .....	130m Pa.s
Ingredient .....	Ethyl Cyanoacrylate
Skill level .....	Adv/Med
Size .....	10ml



# COMING SOON: LED LIGHT TECHNOLOGY!

---



Exciting things are on the horizon! We are currently testing and experimenting with LED light technology to bring you the safest and most convenient way to enhance your LED Lash experience.

Our goal is to refine and perfect this innovation, ensuring it meets the highest standards of safety, efficiency, and comfort for our lash enthusiasts. Stay tuned as we work behind the scenes to introduce a new era of lashing with LED light technology!

Follow us for updates and be the first to know when it launches!

#ComingSoon

# EXTRA BOND PRIMER

Experience the magic of  
Extra Bond PRIMER

- ▶ Accelerate the drying time.
- ▶ Stronger bond resulting longer retention.



8001024472

## How to use

1. Take one strip of lash extension and place it on a plate.
2. Apply one stroke of Extra Bond Primer on the bottom of the extensions
3. Wait for 10 secs until the primer to completely dry.
4. The lashes are ready to be applied!





Foula  
Moist Clean Eyelash Primer

8001008566

■ Size: 100ml

A pre-treatment toner made in Japan, formulated with 9 plant based ingredients to moisturize and cleanse away excess dirt & oil.



Foula  
Moist Remover Cream Type

8001026052

■ Size: 20g

A light scented Japanese remover with natural aroma and no acetone for rapid results.



Foula  
Remover Gel Type

1002001332

■ Size: 20ml

Non-acetone lash extension remover is specially formulated to be gentle on your eyelashes while effectively removing extensions. The gel consistency ensures precision and prevents any liquid from accidentally getting into your eyes, making it safe and easy to use—perfect for beginners and professionals alike.

ADHESIVE

REMOVER  
PRIMER

AFTER CARE

EXTENSIONS

TWEEZER

TAPE

ACCESSORIES

LASH LIFT



Foula

LED Remover

8001027332

■Size: 20ml

This remover is compatible with both cyanoacrylate-based and regular adhesives. With its high viscosity, it's easy to apply and adheres firmly for fast, efficient removal.



Foula

Moist Remover Hybrid

8001027370

■Size: 20g

Faster removal time compared to previous formulas—ready in just 1.5 minutes after application. Enhanced with a pleasant floral fragrance. Medium viscosity, ideal for those who prefer using a spatula for glue removal. Suitable for Regular/LED glue removal.



# AFTER CARE

Japan's largest selection of products

*Aftercare*



Foula

### Lash Coating

1 p c : 8001027594  
12pcs: 8001027597  
■Size: 10ml

Coating serum for your eyelash extensions. One of our best-selling eyelash extension after care product at Foula Store, this daily coating serum helps improve the retention of your eyelash extensions.



Foula

### Clear Coating Essence

1 p c : 8001027589  
12pcs: 8001027592  
■Size: 10ml

This advanced Coating Essence is formulated to nourish and restore eyelashes damaged by frequent use of mascara and extensions. It strengthens the lashes and enhances their elasticity, promoting healthier growth.



Foula

### Black Coating

1 p c : 8001023051  
12pcs: 8001023053  
Size: 10ml

Infused with over 20 serum ingredients to protect the lashes, It shields the lash adhesive from moisture, humidity and oils, preventing premature lash fallout.  
Also ideal for use after lash lifts.



Foula

### Lash Fixer

1 p c : 8001022747  
12pcs: 8001022749  
Size: 10ml

A special coating that keeps lashes with extensions/lash lift perfectly in place all day and tames tangled lashes. You can use it by itself to protect and moisturize your lashes or as a mascara base.

*Cité*  
LASH LIFT



## Re:act LASH SERUM

Repairs the damage after the lash lift, deeply hydrates the lashes, and lays foundation for healthy lashes.

Deeply hydrates lashes with a premium blend of moisturizing ingredients.

A lash treatment that "reacts" with damaged lashes and creates a healthy foundation for your lashes so they remain strong and supple.



1PC

8001024468



12 PCS SET

8001024469





Foula

Moist Lash Foam

8001016151

■Size: 50ml

Perfect for gentle cleansing, the soft foam grabs dirt, debris, and removes all the oiliness from the lashes. Keep your eyes and lashes healthy and enjoy the long lasting extensions!



Foula

Upcycling Eye Shampoo  
Brush

8001026545

■Material: upcycled pbt

Specially designed to gently cleanse dirt and impurities around the delicate eye area, ensuring a soft and effective cleaning experience without excessive rubbing.

ADHESIVE

REMOVER  
PRIMER

AFTER  
CARE

EXTENSIONS

TWEEZER

TAPE

ACCESSORIES

LASH LIFT

*moist***ROZA****Cleansing Gel**

## Moist Roza Cleansing Gel

-Oil free facial and eye cleansing gel-

A renewed and upgraded version developed in response to customer feedback for a more effective makeup removal.



150ml

8001015878

# Tint Coating



## Tint Coating

Highly resistant to tears, sweat, water, sebum, smudging, and rubbing.

Tint Coating ensures your lashes look sharp even after a sauna or swim. Ideal for home care use and highly recommended as a retail product for salons. Lasts longer when paired with a black tint system. Suitable for both lash extensions and lash lifts. Helps maintain long-lasting curls.

Note: The coating will gradually wear off in 3 to 5 days. Reapply as needed.



10ml

8001027586

ADHESIVE

REMOVER  
PRIMER

AFTER  
CARE

EXTENSIONS

TWEEZER

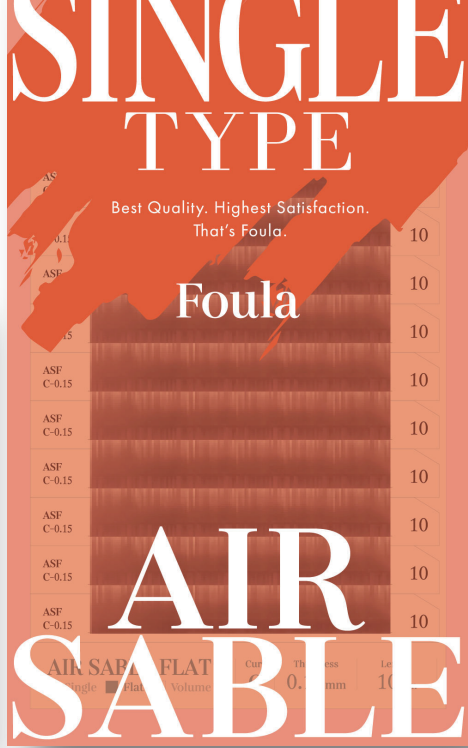
TAPE

ACCESSORIES

LASH LIFT

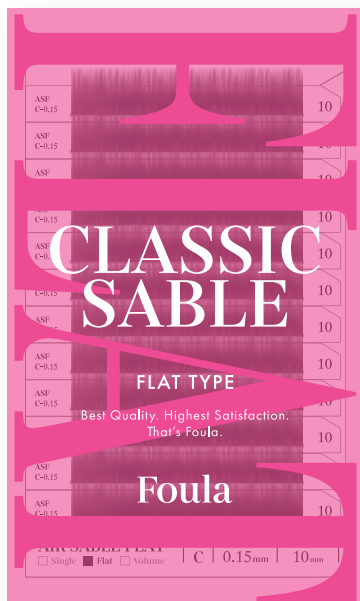
Lashes (High Quality PBT)

Comfy & Heat-Chem Resistant  
Easy to Clean and Hypoallergenic



Packaging (High Quality PET)

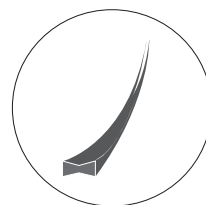
Lightweight, Reliable & Eco-Friendly  
Effortless & Protective



## CLASSIC SABLE FLAT

### DESCRIPTION

- Curl ..... J(B)/C/D
- Diameters ..... 0.10/0.15/0.20 mm
- Length ..... J(B) : 7-15mm  
C : 8-15mm  
D : 9-15mm
- Mixed Length..... 9mm(1row)/10mm(3rows)/  
11mm(3rows)/12mm(3rows)/  
13mm(2rows)
- Color ..... Black

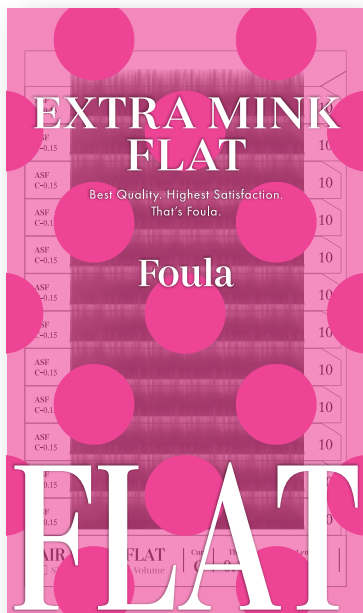


FLAT TYPE

Light gentle, cashmere grade comfort, delivering the ultimate softness.

Its flat base and W-cut Tip creates a matte black finish, mimicking the look of natural lashes.

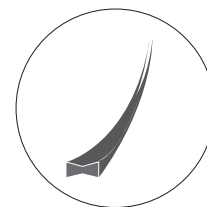




EXTRA MINK FLAT

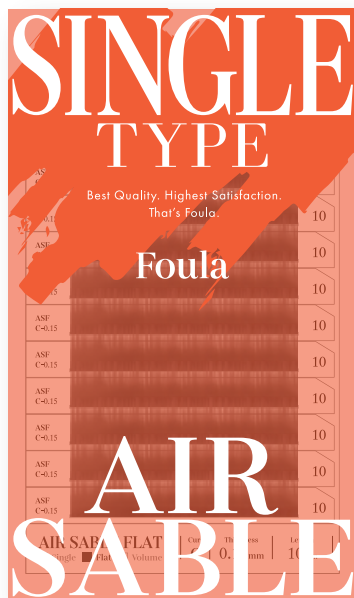
## DESCRIPTION

- |                     |   |
|---------------------|---|
| ■ Curl .....        | J(B)/C/D  |
| ■ Diameters .....   | 0.15/0.20 mm                                      |
| ■ Length .....      | J(B): 6-15mm<br>C: 6-15mm<br>D: 9-15mm            |
| ■ Mixed Length..... | 9mm(3row)/10mm(3rows)/<br>11mm(3rows)/12mm(3rows) |
| ■ Color .....       | Black   |



FLAT TYPE

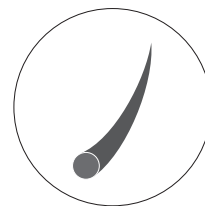
A natural glow that seamlessly complements your eyes. It features a strong curl and offers better longevity than traditional air mink lashes. This creates full volume from base to tip, delivering an elegant, stunning finish like never before.



## AIR SABLE

### DESCRIPTION

- Curl ..... J(B)/C/D
- Diameters ..... 0.10/0.12/0.15/0.20/0.25mm
- Length ..... J(B) : 6-15mm  
C : 6-15mm  
D : 6-15mm
- Mixed Length.....9mm(1row)/10mm(3rows)/  
11mm(3rows)/12mm(3rows)/  
13mm(2rows)
- Color ..... Black



SINGLE TYPE

Air Sable Lashes, known for its lightness and softness, make them a more comfortable option than traditional silk lashes.

With a slight gloss and a naturally fluffy look, they give lashes a soft, natural finish.

We've put a lot of care into creating lashes with an even curl, thickness, and length, offering a smooth curve in J (B), C, and D curls.



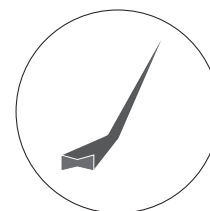


## Foxy Flat Lash

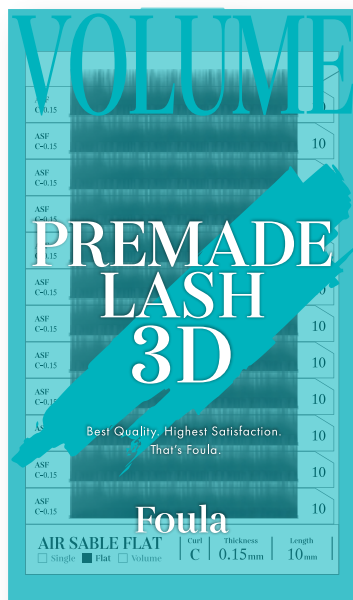
### DESCRIPTION

- Curl ..... L
- Diameters ..... 0.15 mm
- Mixed Length.....9mm(1row)/10mm(3rows)/  
11mm(3rows)/12mm(3rows)/  
13mm(2rows)
- Color ..... Black

Designed with an angled extension that mimics the look of eyeliner, these lashes create a striking effect. The popular flat shape also helps reduce strain on the natural eyelashes.



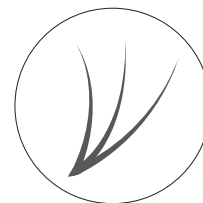
FLAT TYPE



## Premade Lash 3D

### DESCRIPTION

- Curl ..... J(B)/C/D
- Diameters ..... 0.07 mm
- Length ..... J(B) : 9-15mm  
C : 9-15mm  
D : 9-15mm
- Mixed Length ..... 9mm(1row)/10mm(3rows)/  
11mm(3rows)/12mm(3rows)/  
13mm(2rows)
- Color ..... Black



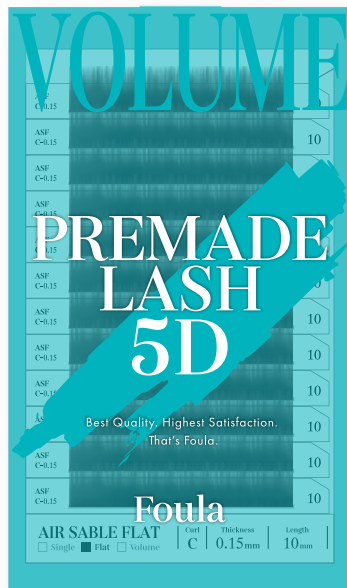
VOLUME TYPE

Pre-Made Volume Lashes offer the simplicity of the classic I by I technique with the stunning effect of voluminous lashes.

Made from ultra-thin 0.07mm lashes, they create a full, fluffy lash line that looks soft and natural while being gentle on natural lashes.

No special volume tweezers are required, making them as easy to apply as classic lashes.

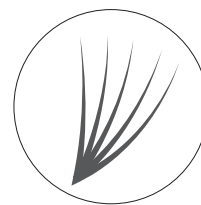
Perfect on their own or mixed with classic I by I extensions, these pre-made fans are a popular choice for cutting down application time without compromising on style.



## Premade Lash 5D

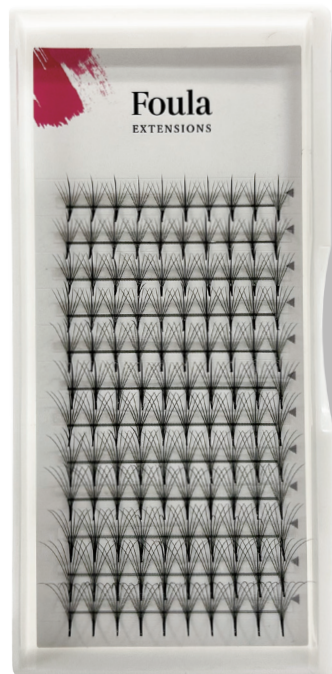
### DESCRIPTION

- Curl ..... J(B)/C/D
- Diameters ..... 0.07 mm
- Length ..... J(B) : 9-15mm  
C : 9-15mm  
D : 9-15mm
- Mixed Length ..... 9mm(1row)/10mm(3rows)/  
11mm(3rows)/12mm(3rows)/  
13mm(2rows)
- Color ..... Black



VOLUME TYPE

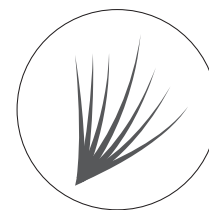
The 5D Pre-made Lashes make achieving a voluminous-look effortless. Crafted with ultra-thin 0.07mm fibers, they are lightweight and gentle on the natural lashes, all while delivering a bold and dramatic effect. Mix and match with single lashes or 3D lashes to create customized styles with ease.



## 7D Premade Wispy Lash

### DESCRIPTION

- Curl ..... J(B)/C/D
- Diameters ..... 0.07 mm
- Mixed Length.....9mm(2rows)/10mm(2rows)/  
11mm(2rows)/12mm(2rows)/  
13mm(2rows)/14mm(1row)/  
15mm(1row)
- Color ..... Black



VOLUME TYPE

Designed with 6 ultra-fine extensions surrounding a flat lash at the center, this unique structure creates a full, voluminous look while remaining lightweight and comfortable for natural lashes.

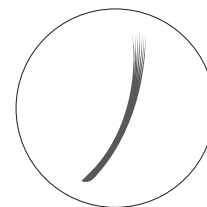


## Spike Lash

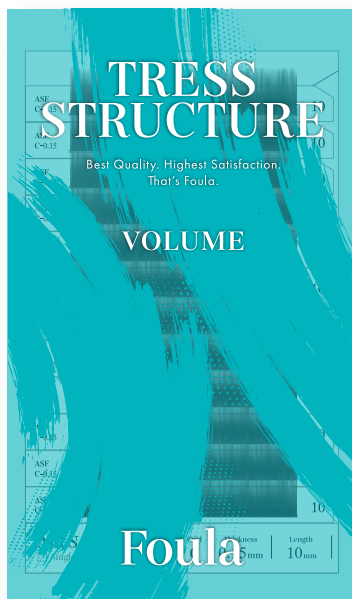
### DESCRIPTION

- Curl ..... J(B)/C/D
- Diameters ..... 0.07mm
- Mixed Length.....9mm(2rows)/10mm(2rows)/  
11mm(2rows)/12mm(2rows)/  
13mm(2rows)/14mm(1row)/  
15mm(1row)
- Color ..... Black

The bundle of ultra-fine extensions adds volume and ensures lasting beauty, maintaining its full effect over time.



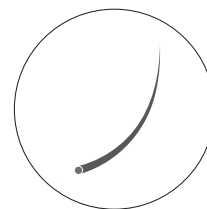
VOLUME TYPE



## TRESS STRUCTURE

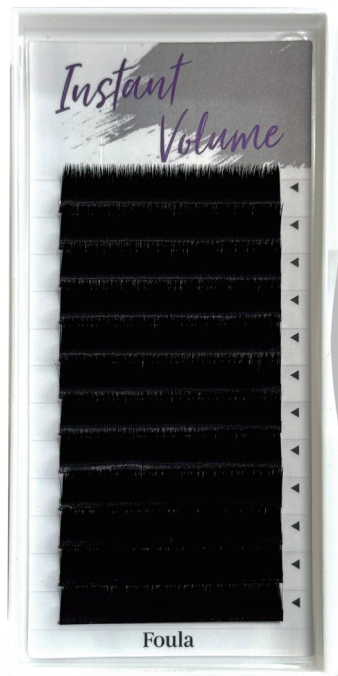
### DESCRIPTION

- Curl ..... J(B)/C/D
- Diameters ..... 0.05/0.07 mm
- Length ..... J(B):6-15mm  
C:8-15mm  
D:9-15mm
- Mixed Length.....9mm(1row)/10mm(3rows)/  
11mm(3rows)/12mm(3rows)/  
13mm(2rows)
- Color ..... Black



VOLUME TYPE

These lashes are soft with a natural color, resembling real lashes. The tape is designed for easy fan creation, making it beginner-friendly and simple for technicians to use.

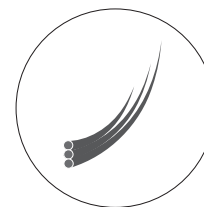


## Instant Volume Lash

### DESCRIPTION

- Curl ..... J(B)/C/D
- Diameters ..... 0.07mm
- Length ..... J(B): 7-15mm  
C: 8-15mm  
D: 9-15mm
- Mixed Length..... 9mm(1row)/10mm(3rows)/  
11mm(3rows)/12mm(3rows)/  
13mm(2row)
- Color ..... Black

3 different lengths of extension layers create unique, thick, and voluminous lashes. The fan shape remains stable even after picking up the lashes from the strip.



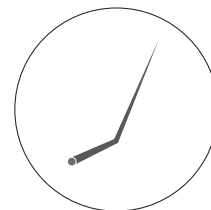
VOLUME TYPE



## Foxy Volume Lash

### DESCRIPTION

- Curl ..... L
- Diameters ..... 0.05 mm
- Mixed Length.....9mm(1row)/10mm(3rows)/  
11mm(3rows)/12mm(3rows)/  
13mm(2rows)
- Color ..... Black



VOLUME TYPE

Features a sharp angle that mimics the look of eyeliner, closely matching the thickness of natural eyelashes while adding volume.



# Lash gloss

## Color Extensions



FLAT TYPE



Dark Brown

Melty Brown

Ash Brown



Sand Gray

Light Brown

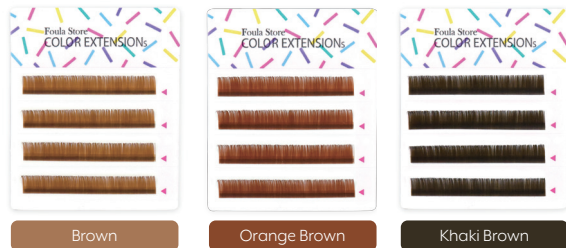
Nudie Beige

## Lash Gloss

### DESCRIPTION

- Curl ..... J(B)/C/D
- Diameters ..... 0.15 mm
- Length ..... 7mm-13mm  
9-13mm MIX
- Color ..... Dark Brown  
Melty Brown  
Ash Brown  
Sand Gray  
Light Brown  
Nudie Beige

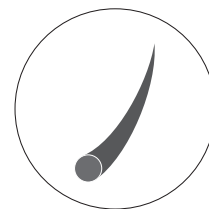
It contains both highlight and lowlight color extensions, each featuring three different shades that create a fabulous effect on the eyelashes. You can also use them as color lashes in combination with black extensions.



## Color Extensions

### DESCRIPTION

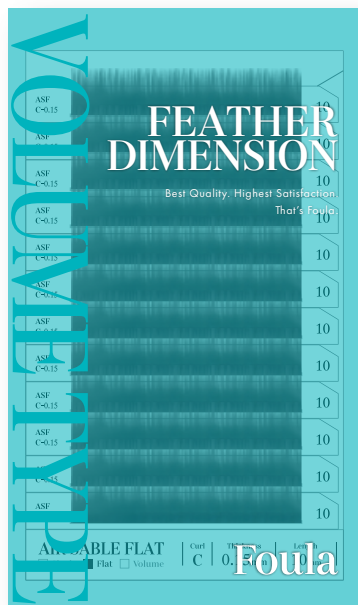
- Curl ..... J(B)/C/D
- Diameters ..... 0.10/0.15/0.18/0.20mm
- Length ..... 7-13mm
- Color ..... Brown  
Orange Brown  
Khaki Brown  
Dark Brown  
Wine Red



### SINGLE TYPE

It features an easily introducible volume and a wide range of sizes, making it suitable for salons.

The colors are vibrant and can be used widely for both events and everyday use.

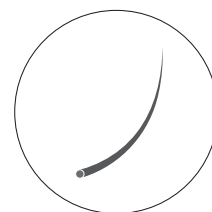


## FEATHER DIMENSION

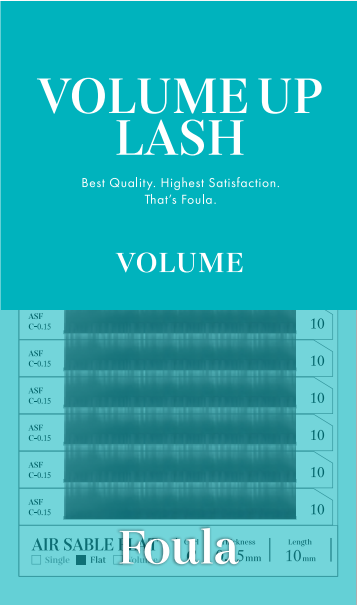
### DESCRIPTION

- Curl ..... J(B)/C/D
- Diameters ..... 0.06 mm
- Length ..... 6-15mm
- Mixed Length.....9mm(1row)/10mm(3rows)/  
11mm(3rows)/12mm(3rows)/  
13mm(2rows)
- Color ..... Black

A matte black finish that gives a natural, no-makeup lash look. Emphasizing softness, it provides a light, airy, and feather-like feel.



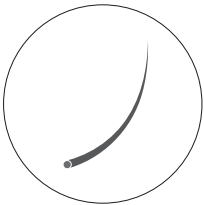
VOLUME TYPE



# VOLUME UP LASH

## DESCRIPTION

- Curl ..... J(B)/C/D
- Diameters ..... 0.05 mm
- Length ..... 8 - 15mm
- Color ..... Black



VOLUME TYPE

With a thickness that closely matches natural lashes, it puts minimal strain on your own.  
Its impressive durability makes it so comfortable, you'll hardly notice you're wearing them



Brown



Khaki Brown



Dark Brown



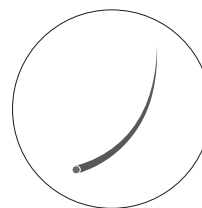
Wine Red

## Color Volume Up Lash

### DESCRIPTION

- Curl ..... J(B)/C/D
- Diameters ..... 0.06mm
- Length ..... 9-15mm
- Color ..... Brown  
Khaki Brown  
Dark Brown  
Wine Red

Get the most natural-looking yet noticeable color. You can enjoy a more stylish look by matching it with your hair color.



VOLUME TYPE

**Foula**  
EYELASH EXTENSIONS





Foula

Japan Made Micro Tweezer Titanium Straight 125mm

8001006956



Foula

Japan Made Micro Tweezer Titanium Angle Curved 125mm

8001006960



Foula

Japan Made Micro Tweezer Titanium Curved 125mm

8001006957



Foula

Japan Made Micro Tweezer Titanium Straight 160mm

8001004331



Foula

Japan Made Micro Tweezer Titanium Curved Small 125mm

8001006959



Foula

Japan Made Micro Tweezer Titanium Ultra Thin Tip Type 125mm

8001006958

ADHESIVE

REMOVER  
PRIMER

AFTER CARE

EXTENSIONS

TWEezer

TAPE

ACCESSORIES

LASH LIFT



Foula  
Japan Made Micro Tweezer Straight Small 120mm

8001004936



Foula  
Japan Made Micro Tweezer Angle Curved 125mm

8001004329



Foula  
Japan Made Micro Tweezer Straight 125mm

8001004326



Foula  
Japan Made Micro Tweezer Hook Angle Type 1 125mm

8001004931



Foula  
Japan Made Micro Tweezer Straight 160mm

8001004330



Foula  
Japan Made Micro Tweezer Hook Angle Type 3 125mm

8001004938





Foula

Japan Made Micro Tweezer Angle Curved for 3D 125mm

8001011317



Foula

Japan Made Micro Tweezer Ultra Thin Tip 125mm

8001004935



Foula

Japan Made Micro Tweezer Curved Small 125mm

8001004933



Foula

Japan Made Micro Tweezer Curved Soft Touch 140mm

8001004932



Foula

Japan Made Micro Tweezer Curved 125mm

8001004328



Foula

Japan Made Micro Tweezer Multipurpose

8001004934

ADHESIVE

REMOVER  
PRIMER

AFTER CARE

EXTENSIONS

TWEEZER

TAPE

ACCESSORIES

LASH LIFT



Foula  
【Standard】 Tweezer Straight

1002001374



Foula  
【Standard】 Tweezer X Shape

1002001371



Foula  
【Standard】 Tweezer Curved

1002001373



Foula  
【Standard】 Tweezers Flat Type

8001025974



Foula  
【Standard】 Tweezer Hook Angle

1002001372



Foula  
【Standard】 Tweezer Small Curved

8001024653



Foula

【Standard】 Gold Tweezer Straight

8001012543



Foula

【Standard】 Gold Tweezer Hook Angle 1

8001023877



Foula

【Standard】 Gold Tweezer Curved

8001012544



Foula

【Standard】 Tweezer Wide Curved

8001010232



Foula

【Standard】 Gold Tweezer Hook Angle 2

8001025158



Foula

Japan Made Micro Tweezer Flat

8001004327

ADHESIVE

REMOVER  
PRIMER

AFTER CARE

EXTENSIONS

TWEEZER

TAPE

ACCESSORIES

LASH LIFT



# SURGICAL TAPE

Japan's largest selection of products

*Surgical Tape*



Nichiban  
Skinergate for Lower  
Eyelashes

1 ROLL	9004000013
1BOX/24 ROLLS	1104000625

SIZE: W12mm×7m

- Stays dry
- Minimal moisture retention prevents irritation
- Protects the skin's natural barrier
- Secure adhesion
- Flexible and fits to the skin
- Wide range of use such as for lower eyelash and upper eyelid



Nichiban  
Skinergate Spat Tape

1 ROLL	8001017361
1BOX/24 ROLLS	8001017360

SIZE: W12mm×7m

- Gentle adhesion
- Lint-Free
- Surgical quality, designed for professional use
- Low irritation for sensitive skin
- Easy to cut by hand



Nichiban  
Skinergate Mesh Tape

1 ROLL	8001003516
1BOX/24 ROLLS	8001003518

SIZE: W12mm×7m

- High moisture permeability
- Flexible
- Secure adhesion
- Reduced pain during removal



Nichiban  
Keep Pore Tape

1 ROLL	9004000015
1BOX/24 ROLLS	1104000627

SIZE: W12mm×7m

- Easy hand-tearing
- Strong secure adhesion
- Low irritation for sensitive skin

Nitto Medical

### Yukiban Plastic Tape



1 ROLL	8001004332
1BOX/24 ROLLS	8001004334

■ SIZE: W12mm × 7m

- Transparent and innovative adhesive surgical tape
- Low irritation for sensitive skin
- The plastic tape that is gentle on the skin to protect stratum corneum.



Nitto Medical

### Yukiban Alpha Tape

1 ROLL	8001017358
1BOX/24 ROLLS	8001017357

■ SIZE: W12mm × 7m

- Gel type of adhesive
- Lint-Free
- Perfectly fitted to skin
- Surgical quality, designed for professional use
- Latex-free
- Low irritation for sensitive skin
- Water resistant



Nitto Medical

### Yukiban Non-woven Tape

1 ROLL	9004000014
1BOX/24 ROLLS	1104000626

■ SIZE: W12mm × 7m

- Gentle adhesion
- Lint-Free
- Surgical quality, designed for professional use
- Latex-free
- Low irritation for sensitive skin
- Water resistant



Nitto Medical

### Yukiban GS Tape

1 ROLL	1104000628
1BOX/24 ROLLS	1104000629

■ SIZE: W12mm × 7m

- Gentle adhesion
- Lint-Free
- Surgical quality, designed for professional use
- Latex-free
- Low irritation for sensitive skin
- Water resistant



### Nichiban Paper Adhesive Tape Smooth Surface

1 ROLL	9006000021
1BOX/10 ROLLS	9006000022

■SIZE: W9mm×10m

- Good adhesion and holding power.
- Low irritation for sensitive skin
- Easily cut by hand
- Water repellent
- Lint-Free
- Thick enough to protect from tweezer



### 3M Gentlefix Easy-Cut

1 ROLL	8001018657
1BOX/24 ROLLS	8001018659

■SIZE: W12.5mm×7m

- Easy cut by hand
- Low irritation for sensitive skin
- Sticks and fits to the skin well
- Special woven



### 3M Micropore Surgical Tape

1 ROLL	1002001342
1BOX/24 ROLLS	8001025475

■SIZE: W12.5mm×7m

- Gentle adhesion
- Comfortable and highly breathable
- Hypoallergenic and not made with natural rubber latex



### Foula Fine Tape 10rolls

10 ROLLS	8001027361
----------	------------

■SIZE: W4mm×7m



Foula

### Under Eye Gel Patches

1pair 8001015458  
100pairs 8001015459

Infused with beauty ingredients, this eye sheet protects lower lashes during any lash services. Vitamin C hydrates and revitalizes the delicate eye area, reducing dullness. These eye patches come in a hygienic aluminum pack for convenience.



Medidea

### Surgical Tape Cutter with Cover (Pink B)

8001004607

Size: W12mm

Can be opened and close with one hand.  
Clean and sharp cut of the tape for proper application.  
Easy to remove and change the tape.  
Has a nonslip base for grip.  
Applicable for all tapes sold at Foula Store.



Medidea

### Surgical Tape Cutter with cover (Pink PP)

8001027080

Size: W12mm

Can be opened and close with one hand.  
Clean and sharp cut of the tape for proper application.  
Easy to remove and change the tape.  
Has a nonslip base for grip.  
Applicable for all tapes sold at Foula Store.



**Foula**  
EYELASH EXTENSIONS





Foula

### Color Stone

Pink 8001023077      Purple 8001023079  
White 8001023078      Blue 8001023080

■Size: 100×91mm approx. / Thickness: 8mm approx.

[Material]: Resin

[How to use]: Apply adhesive to the plate and use it as a glue pallet. The plate helps maintain a consistent temperature, preventing the glue from curing too quickly during your eyelash extension application.



Foula

### Glue Clean Pad 200sheets

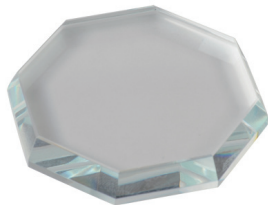
8001022714

■Size: 48mm×48mm

[Material]: Non-woven

[Quantity]: 200 pcs

Cleaning wipes for cleaning the nozzle tip of adhesive bottles. These wipes are specially made for glue tips and wipes off clean without leaving any residue or dust behind. To prevent caps from sticking to the nozzle.



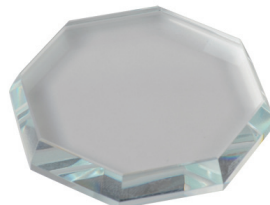
Foula

### Glue Plate Crystal Stone

1002001329

■Size: 62×10mm

Place the adhesive on the plate.  
The plate will slow down the  
curing of the adhesive during the  
application.



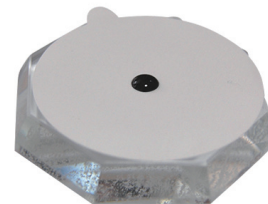
Foula

### Glue Plate Crystal Stone with coating

1002001330

■Size: 62×10mm

Place the adhesive on the plate.  
The plate will slow down the  
curing of the adhesive during the  
application.



Foula

### Glue Plate Sticker 100pcs

8001003513

■Size: 55mm 100pcs

Protection sheet sticker for  
adhesive plate. The stickers are  
disposable. 100 pcs.



Foula

Glue Mat Teflon Surface 1pc

8001006476

■Size: 45mm

Place the mat on the adhesive plate for easy cleaning. The mat slows down the curing time of the adhesive, resulting in a smoother application.



Foula

Glue Plate (Jade Stone)

1002001328

■Size: 51mm 20g

Place the adhesive on the plate. The plate will slow down the curing of the adhesive during the application.



Foula

Cosmetic Scissor

1002001343

■Size: 88×45mm

Small scissors designed to cut surgical tapes and to be used during brow services.



**Foula**  
**Disposable Mascara Brush**  
**Light Pink 100pcs**

8001009563

■Size: HANDLE LENGTH : 72mm  
 BRUSH TIP : 27×8mm



**Foula**  
**Disposable Mascara Brush**  
**Black 100pcs**

8001007610

■Size: HANDLE LENGTH : 72mm  
 BRUSH TIP : 27×8mm



**Foula**  
**White Brush Disposable**  
**Applicators 100pcs**

8001016135

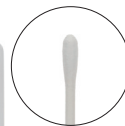
■Size: HANDLE LENGTH : 78mm  
 BRUSH TIP : 12.5×4.5mm



**Foula**  
**White Brush Replaceable Tips**  
**300pcs**

8001016136

■Size: 12.5×4.5mm



**Foula**  
**Baby Cotton Swab**

8001003874

■Size: HANDLE LENGTH : 57mm  
 BRUSH TIP : 10×3mm

ADHESIVE

REMOVER  
PRIMER

AFTER CARE

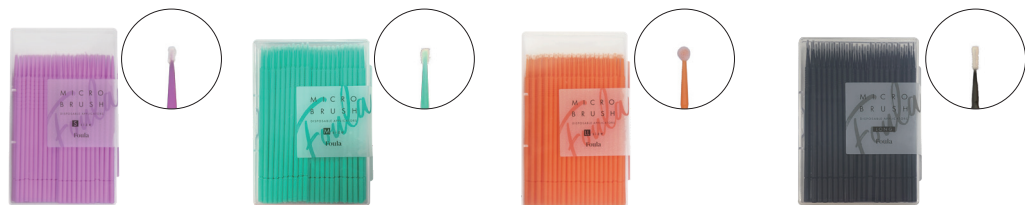
EXTENSIONS

TWEEZER

TAPE

ACCESSORIES

LASH LIFT



Foula

Micro Brush

S 8001010491  
 ■Size: 1.5mm

M 8001010490  
 ■Size: 2mm

LL 8001010488  
 ■Size: 3mm

LONG 8001023055  
 ■Size: 5mm



Foula

Stainless Comb

8001008791  
 ■Size: HANDLE LENGTH : 110mm  
 BRUSH TIP : 24mm



Foula

Screw Mascara Brush

8001004599  
 ■Size: HANDLE LENGTH : 167mm  
 BRUSH TIP : 24×8mm



Foula

Comb (S)

1001000037  
 ■Size: HANDLE LENGTH : 119mm  
 BRUSH TIP : 24mm



Foula

Pocket Ventilator Black

8001009559

■Size: H118×W70×D28mm

Blows off irritating Fumes of the adhesive, and helps harden.



Foula

Pocket Ventilator Pink

8001009560

■Size: H118×W70×D28mm

Blows off irritating Fumes of the adhesive, and helps harden.



Foula

Pocket Ventilator Light Pink

8001021666

■Size: H118×W70×D28mm

Blows off irritating Fumes of the adhesive, and helps harden.



Foula

### Eyelash Extension Master Guide Book - English

8001016362

■Size: B5 118p

Everything you need to know about eyelash extensions is in this textbook. You can master from basic to advanced techniques, with detailed guidance and illustrations. For both beginners and advanced technicians.



Foula

### Strip Lashes for Practice 10pairs

8001007084

■Size: 20pcs

Strip lashes to practice eyelash extensions application. Place the strip on mannequin for practice.



Foula

### Eyelash Stimulator 10pcs

8001009505

■Size: 126mm 10pcs

Eyelash stimulator is used for displaying your designs and styles to prevent miscommunication with clients.



Cite

### Multi Clear Case

8001024461

■Size: 7.5cm x 10.5cm

A versatile clear case that can be used for various purposes, such as storing silicone rods.





Foula

### Glue Plate Mini 2pcs

8001027087

■Size: 2.5cm

The plate for adhesive.  
The adhesive temperature will be stable on the plate, the Adhesive stay longer. The plate is made from a sturdy material.  
Small size



Foula

### Glue Plate White

8001027130

■Size: 4cm

The plate for adhesive.  
The adhesive temperature will be stable on the plate, the Adhesive stay longer. The plate is made from a sturdy material.



Foula

### Eyelash Extensio U-Ring Plate With Adhesive Plate

8001018185

■Size: 1pc

You can apply the adhesive directly to the created volume fans. Cutting out extra step, the application time will speed up.



Foula

### Eyelash Extension U-Ring Plate

8001009582

■Size: 1pc



Foula

### 200 Gentle Cotton Swabs

1104000605

■Size: 5cm

Very convenient cotton swabs. Easy to use and hygienic.



Foula

### Protection Cap for Tweezer (3pcs)

8001004604

■Size: 3pcs

Includes 3 tweezer caps. Useful to protect the tip of tweezer.



Foula

### Spatula (small)

9006000025

■Size: 18cm

Spatula with thin tip, efficient to use when removing removers and lash lift set cream.



Foula

### Disposable Forehead Protective Sheets 50 pcs

8001015877

■Size: H 190mm × W 90mm

Disposable forehead sheets designed to be placed on the client's forehead to prevent direct contact with the technician. Breathable material and comfortable to use.



Foula

### LED Magnifying Glasses

8001009565

■Size: 1pc

Magnifying glass with LED light. Two types of your choice (glass type/handy type). Magnifying glass is 135 degree adjustable. Magnifier :1x, 1.5x, 2x, 2.5x, 3.5x



# *Cité*

LASH LIFT



## ► Why Cysteamine?

---

The primary ingredient in the Cité Pro-system Lifting Lotion is Cysteamine, which is gentler and less damaging to lashes. Unlike Thioglycolic Acid, a Cysteamine-based solution reduces the risk of over-processing and enhances the natural lashes by nourishing them with keratin.

## ► What is a Registered Cosmetic Product in Japan?

---

Japan upholds some of the most stringent cosmetic regulations globally. The Cité Keratin Lash Lift- Pro System set has undergone comprehensive evaluations throughout every phase of its research and development, earning its official registration as a cosmetic product in Japan. It has also been listed under MOCRA FDA.

## ► HOW TO USE

---

1. Apply Cité 1(First) after lifting the lashes on the rods.
2. Leave on for about 5 mins and wash off completely.  
※The processing time depends on the condition of lashes.
3. Lift the lashes on the rods again and apply Cité 2(Second).
4. Leave on for about 5 mins and wash off completely.  
※The processing time depends on the condition of the lashes



Cite

### Keratin Lash Lift Set First & Second Pro System

30g tube 8001027797

10 Sachet Sets 8001027463

1st solution 30 g 8001027461

2nd solution 30 g 8001027462

Size:

【Tube】 1st solution 30 g×1 2nd solution 30 g×1

【Sachet】 1st solution 1 g×10 2nd solution 1 g×10

Keratin Lash lift lotion made in Japan. This cysteamine formula is specifically made for lash lift professionals. This formula specializes in lash treatment, repairs, and moisturizes the lashes.

A new cité product developed with the feedback from salons who use our cité keratin lash lift set. The main ingredient of the cité lifting lotion is Cysteamine, which is less damaging and more gentle on the lashes. Compared to Thioglycolic acid, using a Cysteamine-based solution minimizes the possibility of over-processing and boosts nourishment of the natural lashes with keratin. No.1 Pro agent (setting time: 5mins) no.2 Pro agent (setting time: 5mins).



Cite

### Lash Lift Lotion (10 sets)

8001023832

Size: 1st : 0.8g / 2nd : 0.8g ×10

High-quality lash lift agent made in Germany, designed for advanced technicians. The main ingredient, Thioglycolic acid, forms healthy, long-lasting curls in just minutes. With a setting time that is twice as fast as other formulas, it delivers quick results. No.1 agent (setting time: approx. 3-5 minutes) and No.2 agent (setting time: approx. 3-5 minutes).

# LASH CONTROL SYSTEM



## < Pre-treatment >

8001026765

### BASE CONTROL



Keratin PPT and collagen (\*1) are used to restore the hydrophobicity of the eyelashes, creating the ideal base for Cité 1. The pH is also adjusted to an alkaline level to enhance the effectiveness of cité 1.

\*1 Hydrolyzed Keratin, Hydrolyzed Collagen

Size : 20ml



## < Mid-treatment >

8001026766

### AC CONTROL



This step neutralizes the alkalinity of the eyelashes, which often becomes elevated after using Cité 1, helping to prevent over-processing.

CMC and 11 types of amino acids penetrate deep into the lashes, repairing proteins lost from the cuticle.

\*2 DI(Phytosteryl/Octyldodecyl) Lauroyl Glutamate

Size : 20ml



## < Treatment >

8001026767

### KERATIN CONTROL SERUM



Contains 5% or more keratin ingredients. In addition to the rare cashmere keratin (3), four types of keratin with varying molecular weights—from high to low—are blended to enhance eyelash strength and improve curl retention. Provides intensive care for damage both from within and from external factors.

\*3 Hydrolyzed Keratin (Cashmere Goat)

Size : 9ml



## < Treatment >

8001026768

### ZEIN CONTROL SERUM



Zein protects open cuticles caused by damage and forms a hydrophobic barrier. Nutrients such as amino acids and proteins are infused, making the eyelashes stronger. It reduces damage and results in glossy, healthy eyelashes.

Size : 9ml

ADHESIVE

REMOVER  
PRIMER

AFTER CARE

EXTENSIONS

TWEEZER

TAPE

ACCESSORIES

LASH LIFT



Cite

## Clear Glue Pro



8001025364

Size: 5ml

Water soluble glue that can be removed with water. Faster drying speed than clear glue.



Cite

## Clear Glue



8001017654

Size: 5ml

Water soluble glue that can be removed with water. It has the perfect consistency for smooth application and taking off the rods.



Cite

## Amino Gel Glue



8001021801

Size: 8g

The consistency and adhesion is higher than any other products. The moisturizer and Amino acid contained in the glue makes it easier to use while nourishing the lashes at the same time.



Cite

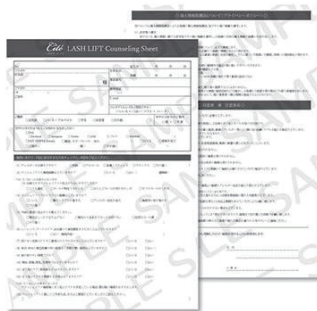
## Fixing Balm



8001026792

Size: 20g

Non-alcoholic balm type Lash Lift glue formulated with 5 natural oils and keratin. Since this balm is non-alcoholic, it can be used for sensitive eyes. Control of the penetration of Lash lift lotion is easy, so overprocessing of the tips of the lashes can be prevented by applying the balm.



Cite  
Consulting/ Consent/  
Precautions Form



English 8001021553

Size: B5 / 50 SHEETS

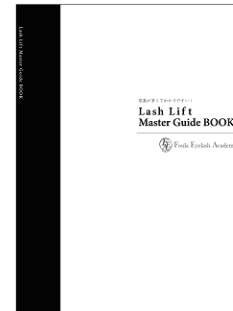


Foula  
Design Counseling Sheet



English 8001021919

Size: B5 / 50 SHEETS



Foula  
Lash Lift Master Guide Book



English 8001021527

Size: B5 / 82 SHEETS



Cite

Cosmetic Wrap



8001021047

Size: 40mm × 40m



Cite

Lift Up Comb L Type



8001023083

Size: 130mm



Cite

Lift Up Comb Y Type



8001023084

Size: 45mm × 7mm



Cite

Lift Up Brush



8001026878

Size: 170mm



Cite

Disposable Lash Lift  
Curl Stick (10pcs)

8001021546

Size: 10pcs



Cite

Bubble Cleaner



8001024473

Size: 100g





Cite  
Lash Applicator Flat  
100pcs



8001023885

Size: 95mm

It is a flexible, flat-type brush. Its flat design provides a wide application surface, making it easy to use.



Cite  
Lash Applicator Flat  
300pcs Tips



8001023886

Size: 1.5mm

The Lash Applicator Flat Tips are designed to replace only the tips, offering a more cost-effective solution.



Cite  
Micro Brush Flexible



8001023884

Size: 100mm

A micro brush with a long, bent tip, allowing for quick application of lotions along the rod.



Cite  
Disposable Mascara  
Brush White 100pcs



8001025162

Size: Handle Length: 72 mm  
Brush: 27 × 8 mm

This is best to maintain lash hygiene and a perfect aftercare gift to give clients.



Cite

Ring Stone White



8001024463

Size: 50mm×28mm



Foula

Ring Stone Pink



8001027092

Size: 50mm×28mm



Foula

Ring Stone Blue



8001027093

Size: 50mm×28mm



Foula

Ring Stone Green



8001027094

Size: 50mm×28mm



Foula

Ring Stone Gray



8001027095

Size: 50mm×28mm



Foula

Ring Stone Yellow



8001027096

Size: 50mm×28mm



Cite

## Keep Paper



8001027086

■Size: 9g / 400~450pcs

The stretchable Keep Paper is applied after the lash lift solutions to prevent the lotion from drying and to keep it securely on the lashes. Its flexible design helps maintain the curl, ensuring optimal hold for long-lasting results.



Cite

## Check Mirror



8001027082

■Size: 58mm×40mm×150mm

The Check Mirror allows you to easily monitor the eye area and design during treatments. With this mirror, you can check the process, such as taping and design, without needing to move to the other side. It also helps you assess layers, balance, and the outline of extensions, ensuring precision throughout the treatment.

ADHESIVE

REMOVER  
PRIMER

AFTER CARE

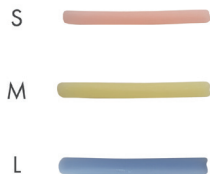
EXTENSIONS

TWEEZER

TAPE

ACCESSORIES

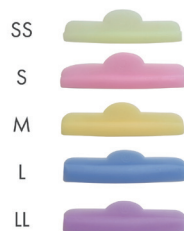
LASH LIFT



Cite  
Multi Rod No.1



8001022607



Cite  
Multi Rod No.2



8001022715



Cite  
Multi Rod No.3



8001023897



Cite  
Multi Rod No.4



8001023898



Cite  
Multi Rod No.5



8001024429



Cite  
Multi Rod No.6



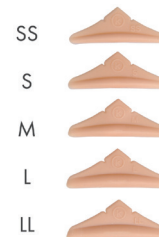
8001022716



Cite  
Multi Rod No.7



8001024726



Cite  
Multi Rod No.8



8001024727



Cite  
Multi Rod No.9



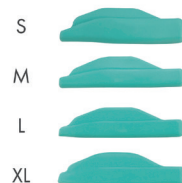
8001025159



Cite  
Multi Rod No.10



8001025363



Cite  
Multi Rod No.11



8001026793



Cite  
Multi Rod No.12



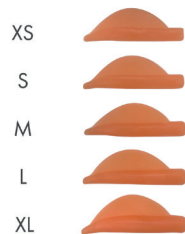
8001026812



Cite  
Multi Rod No.13



8001026813



Cite  
Multi Rod No.14



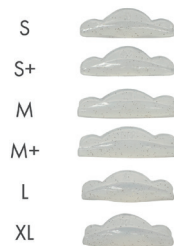
8001026814



Cite  
Multi Rod No.15



8001027653



Cite  
Multi Rod No.16



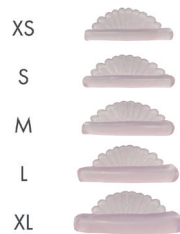
8001027654



Cite  
Multi Rod No.17



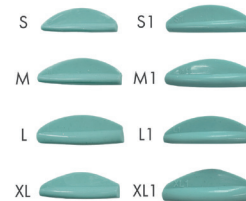
8001027655



Cite  
Multi Rod No.18



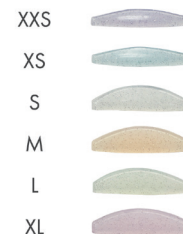
8001027656



Cite  
Multi Rod No.19



8001027657



Cite  
Multi Rod No.20



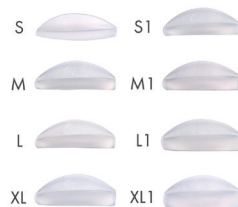
8001027658



Cite  
Flat Rod



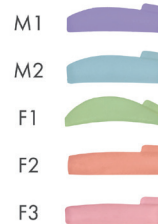
8001027318



Cite  
Standard Shields



8001023523



Cite  
Multi Silicon Rod Mega



8001025960



Cite  
Multi Silicon Rod Pacchi-Lift



8001027220



Cite

Holding Pad



8001027317

Size: 50mm×6mm



Cite

Cotton Stick 50 pcs



8001027124

Size: 73 mm×2mm



Cite

Lift Stick 200 pcs



8001026864

Size: 120mm



Cite

Silicon Pad S



8001017655



Cite

Silicon Pad M



8001017656



Cite

Silicon Pad L



8001017657

ADHESIVE

REMOVER  
PRIMER

AFTER CARE

EXTENSIONS

TWEEZER

TAPE

ACCESSORIES

LASH LIFT



Cite

## Keratin Lash Lift - Basic Kit



8001027782

Perfect Kit for beginners to get started in Keratin Lash Lift with CITE.

Provide your clients with a less damaging, longer-lasting lash lift using our high-quality Cite lash lift products. We prioritize lash health without compromising on the stunning, enduring results of a lash lift. Happy lashes are healthy lashes, ensuring your clients return for more!



Cite

## Keratin Lash Lift And Brow - Full Kit



8001027781

Elevate your artistry with our CITE Professional Kit, designed to help professionals master Keratin Lash Lift and Brow Lamination. This all-in-one kit equips you with high-quality, salon-grade products that deliver stunning, longer-lasting results while prioritizing lash and brow health.

Our CITE Lash Lift PRO SYSTEM is specifically formulated to reduce damage, ensuring healthier, happier lashes for your clients. Achieve flawless lifts and laminations that keep your clients coming back for more, thanks to our gentle yet effective solutions.





Reward yourself with everyday essentials.



Turn your daily routine into a healing ritual.  
Refresh anywhere, anytime with the pleasant fragrance of essential oils.

## Oriental floral fragrance

Cité's original fragrance is made from four carefully selected essential oils.



GERANIUM



YLANG YLANG  
(Ylang Ylang Flower Oil)



PATCHOULI



FRANKINCENSE  
(Boswellia Carterii Oil)

## REFRESHING HAND MIST 8001025443

Sanitize

Surround yourself with pleasant fragrance,  
refresh anywhere, anytime.

Damask rose distilled water<sup>\*1</sup> is generously used instead of purified water. This Refreshing Hand Mist contains 60% alcohol.<sup>\*2</sup> It sanitizes your hands firmly without drying out your skin. It can also be used to disinfect masks and spaces. Enjoy the pleasant fragrance that surrounds you once you use the mist.

\*1 Damask Rose Flower Water (Perfume) / \*2 Ethanol (Solvent)

Contents: 30ml



Cleanse

## MOIST HAND SOAP 8001025446

Moisturizing hand soap with fragrance.

Create a healing space with this hand soap, made with an essential oil formula<sup>\*1</sup> that exudes a relaxing fragrance. The gentle foam helps remove all traces of dirt and oil. The Hyaluronic Acid<sup>\*2</sup> creates a moisturizing veil that soothes and reconditions your skin.

\*1 Fragrance: Geranium Oil, Ylang Ylang Flower Oil

\*2 Hydroxypropyltrimonium Hyaluronate

Contents: 300ml



## DEEP ESSENCE CREAM 8001025449

Moisturize

Rich hydrating cream with essence.  
Nourishment for moisturized face & body.

A rich massage cream that hydrates your skin while imparting the scent of infused essential oils. Gently massage into your skin to see the transformation of the texture from a rich cream to a deep hydrating essence. You can use it on your face, body, and hands.

\*1 Geranium Oil, Ylang Ylang Flower Oil, Boswellia Carterii Oil, Wild Rose Oil (Scented)

Contents: 100g





# Foula Esthetics Academy

## Start Your Lash Journey Today

Whether you're based in Japan or anywhere else in the world, Foula Esthetics Academy is here to guide you on your lash journey. At Foula Esthetics Academy, we specialize in providing world-class lash training and in-person seminars designed for aspiring and experienced lash artists

### What We Offer

- ✓ In-Person Seminars
- ✓ Tailored Courses
- ✓ Ongoing Support

### Why Choose Foula Esthetics Academy?

- ✓ Experienced Trainers
- ✓ Comprehensive Curriculum
- ✓ Global Perspective
- ✓ Flexible Learning Options

Join us at Foula Esthetics Academy, and let's create beautiful lashes together.



# GLOBAL LOCATIONS

---

## Retail Shop

---

### ● Japan

- Foula Store Shibuya
- Foula Store Osaka Umeda
- Foula Store Fukuoka Tenjin
- Foula Beauty/ Foula Massage

### ● Asia

- Foula Store Hong Kong
- Foula Store Taiwan

### ● North America

- Lash-bar Foula  
(Foula Store) New York

### ● Middle East

- Foula Store  
Kate of Tokyo Middle  
East Trading LLC

---

## Office

---

### ● Japan

- Headquarters: Kate of Tokyo Co., Ltd.

### ● Asia

- Kate of Tokyo (HK) Limited
- Kate of Tokyo (TW) Limited

### ● North America

- Kate of Tokyo, Inc.

# Foula Store